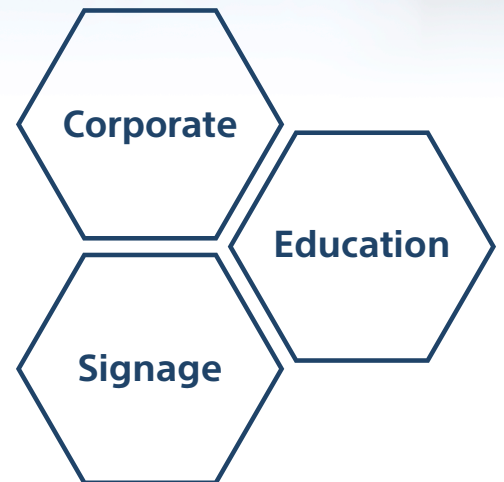
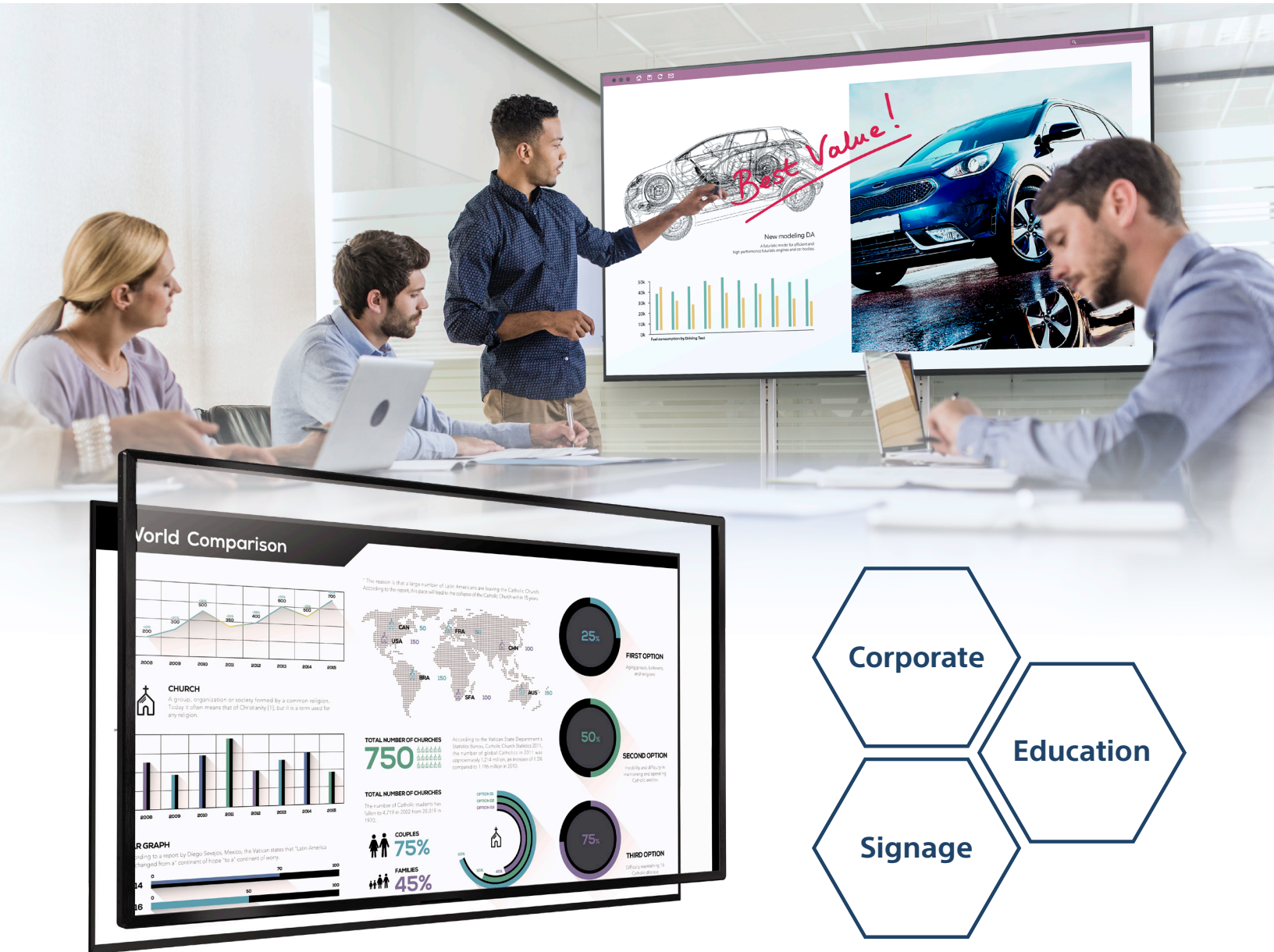
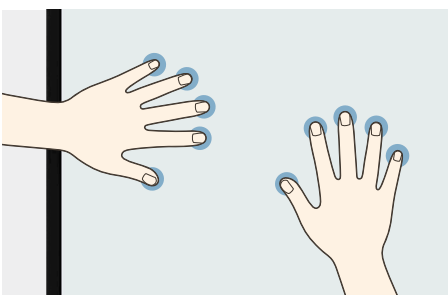


Multi-Touch Overlay Kit

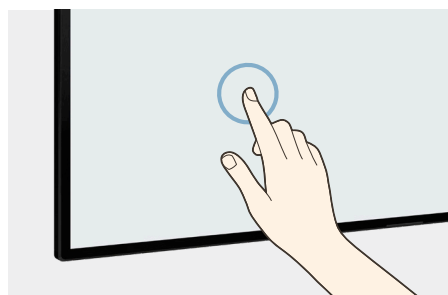
for BRAVIA™ Professional Displays



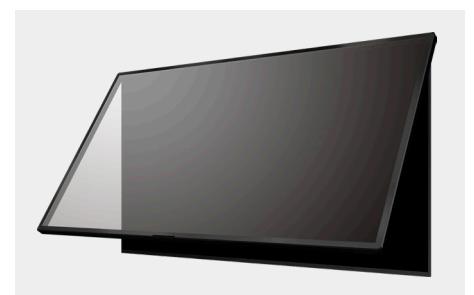
10 Multi-touch
points supported



Anti-fingerprint
coating



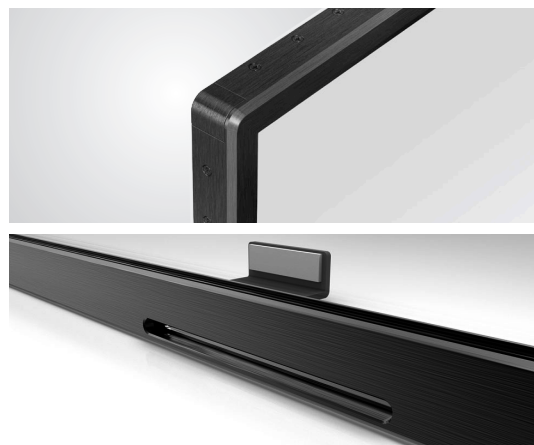
Simple installation
and set up





Stylish & Smart Design

- » High quality design compatible with Professional BRAVIA Displays
- » Stylish bezel with uniform width
- » Slit for remote control and removable USB port for ease of use
- » Advanced glass technology with lightweight design



Quality design and materials



Customizable for Business Applications

- » Supports portrait installation
- » Optimized for collaborative meeting room use with BRAVIA Meeting

※Supports annotation function with Sony software



		STP-55IR200	STP-65IR200	STP-75IR200
TOUCH	Touch type	IR (Infrared Rays) Spread	IR (Infrared Rays) Spread	IR (Infrared Rays) Spread
	Input Method	Finger, Pen and Opaque objects	Finger, Pen and Opaque objects	Finger, Pen and Opaque objects
	Available object size for touch	Single touch 6mm, Multi touch 8mm	Single touch 6mm, Multi touch 8mm	Single touch 6mm, Multi touch 8mm
	Response Time	<15ms	<15ms	<15ms
	Frame Rate	125Hz	125Hz	125Hz
	Touch Accuracy	±2mm (over 90% Area)	±2mm (over 90% Area)	±2mm (over 90% Area)
	Interface	USB2.0 (Type-C)	USB2.0 (Type-C)	USB2.0 (Type-C)
	Protection Glass Thickness	3.0mm	3.0mm	3.0mm
	Protection Glass Transmission	≥85%	≥85%	≥85%
	Operating System Support	Windows 7 / 8 / 8.1 / 10 / Mac OS X (10.6 or later) / Android (Kernel 4.0 or later) / Linux (Kernel 3.5 or later) / Chrome OS		
CONNECTIVITY	Multi touch point	Max 10 Point	Max 10 Point	Max 10 Point
	Touch Resolution	32767×32767	32767×32767	32767×32767
	Input	USB2.0	USB2.0	USB2.0
	Average Current	<300mA	<300mA	<300mA
PHYSICAL SPECIFICATION	Working Voltage	DC 5V±5%	DC 5V±5%	DC 5V±5%
	Color	Black	Black	Black
	Material	Aluminum	Aluminum	Aluminum
	Bezel Width	25.0mm	25.0mm	25.0mm
	Overlay Dimension (W×H×D)	1264.8×735.4×31.6mm	1483.5×858.5×31.6mm	1705.3×983.3×31.6mm
	Weight (Head)	10.9Kg	13.9Kg	17.5g
	Carton Dimensions (W×H×D)	1366×815×140mm	1585×940×140mm	1808×1066×140mm
INSTRUCTION MANUAL	Packed Weight	15.63Kg	19.58Kg	24.83Kg
	Language	Arabic, Chinese, English, French, Japan, Spanish, Russian, Vietnamese		
	Operation Temperature	0°C ~ 40°C	0°C ~ 40°C	0°C ~ 40°C
ENVIRONMENTAL CONDITIONS	Operation Humidity	20% ~ 80%	20% ~ 80%	20% ~ 80%
CERTIFICATION		FCC / CB / RCM / EAC / GB / ICES / RoHS		
BUNDLED ITEM		Attachment Bracket / Instruction Manual / USB Cable (Type-C)		
ELECTRIC SUPPLY		USB Bus Power	USB Bus Power	USB Bus Power